



EC-ESA Joint Earth System Science Initiative



22-24 November 2023 | ESA-ESRIN, Frascati, Italy

Frontiers of science and opportunities

Bridging scales to improve projections of ocean health at the end of the century

○ Marina Lévy | LOCEAN-IPSL
Deputy director Ocean department IRD

Phytoplankton bloom in the Gulf of Finland, Sentinel 2

ESA UNCLASSIFIED - For ESA Official Use Only

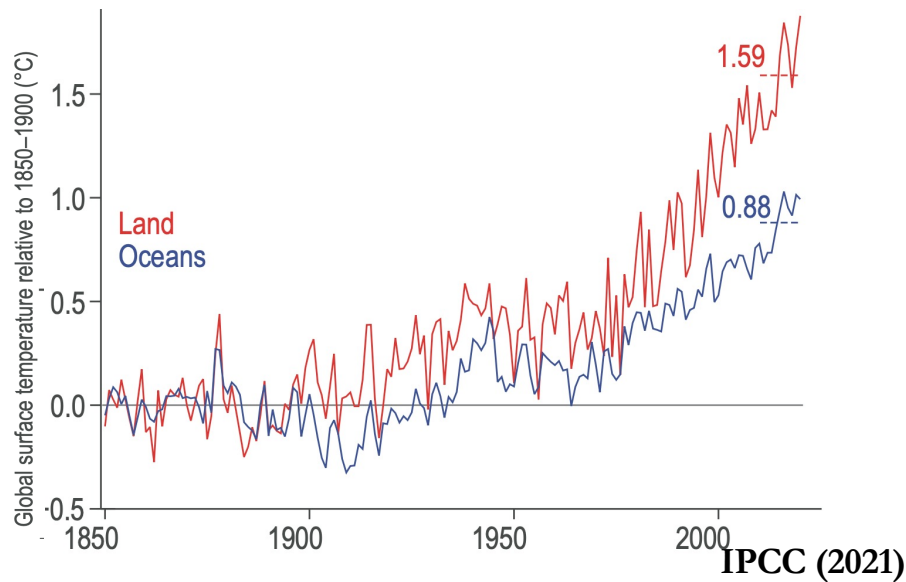


→ THE EUROPEAN SPACE AGENCY

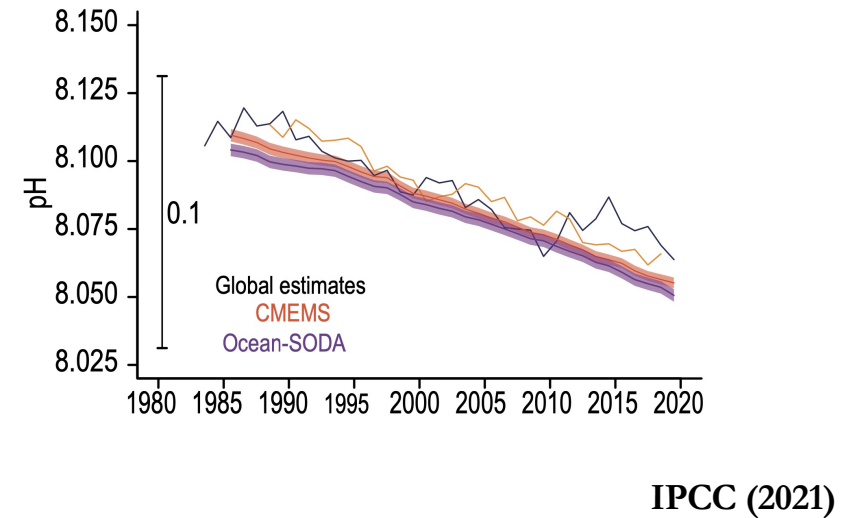
The ocean is shielding us from Climate Change

The ocean has absorbed 90% of excess heat and 25% of anthropogenic CO₂ emissions

Warming

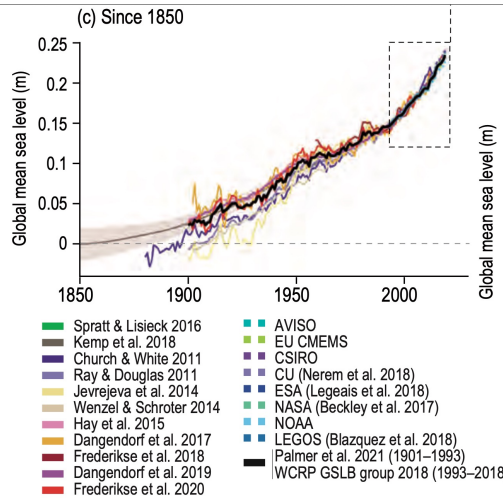


Acidification



At a cost for the ocean health and for our well-being

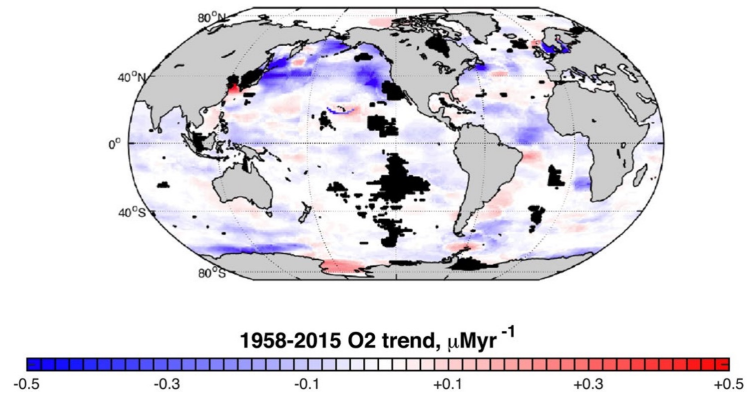
Sea level rise



IPCC (2021)

Deoxygenation

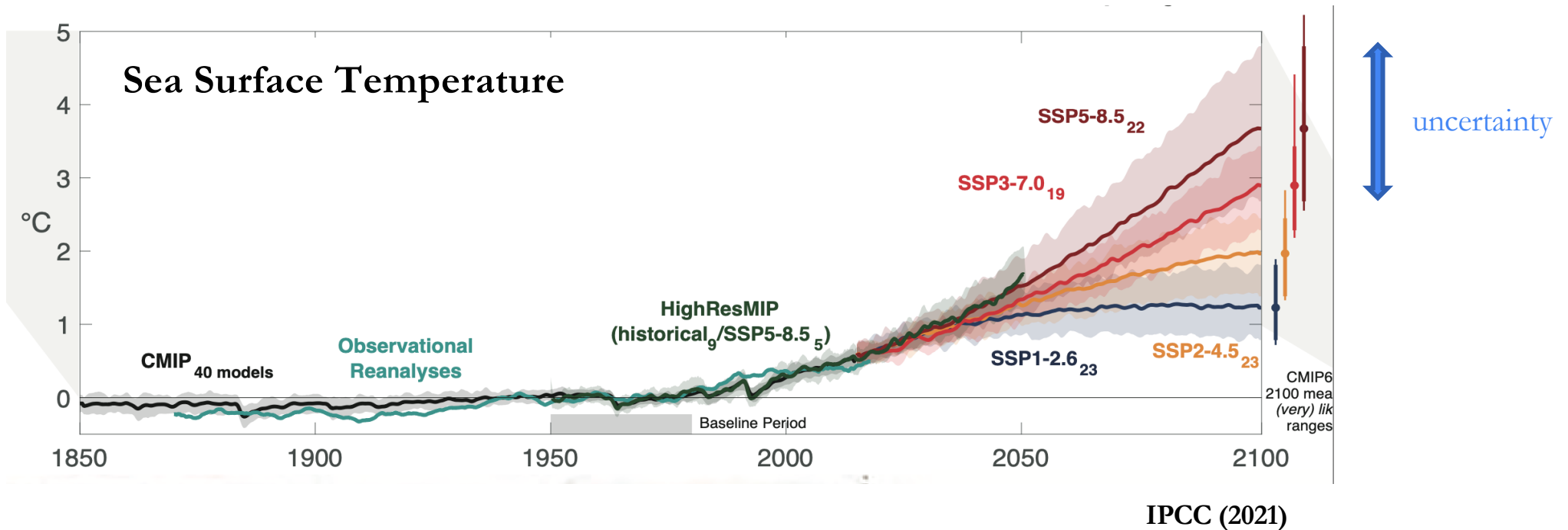
b. 400m



EMB (2023)

Domino effect on marine life and on ecosystem services provided by the ocean

Key question: projection of ocean stressors for 21st century

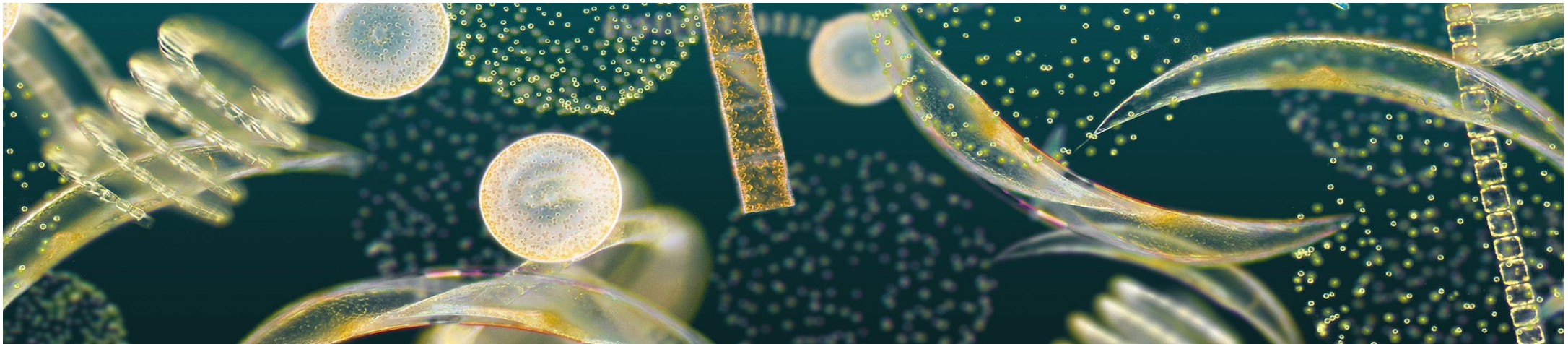


Frontier: uncertainty for a given scenario

Phytoplankton : integrator of ocean stressors

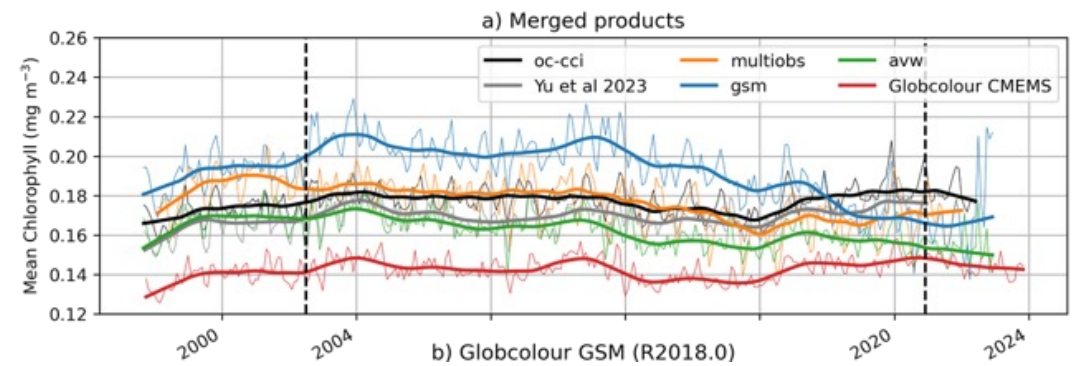
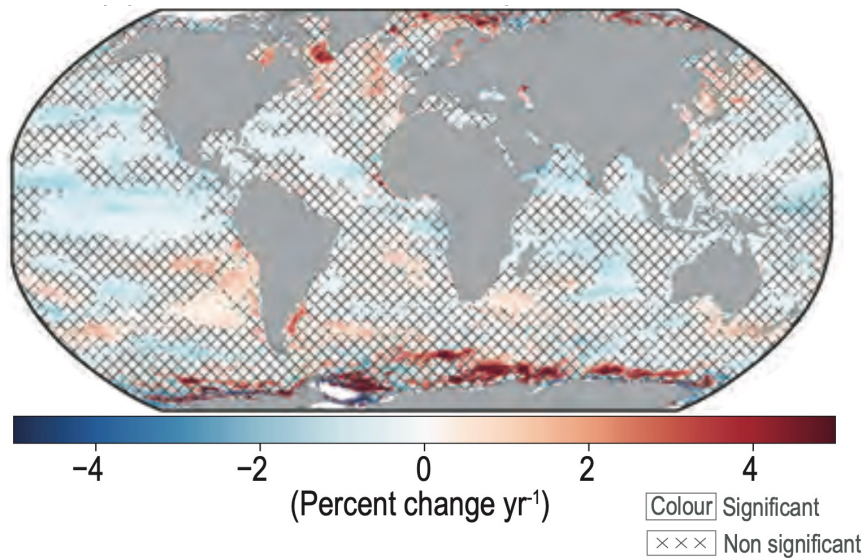
- Unseen majority: 90% of marine biomass, 50% of earth photosynthesis
- Sensitive to changes in temperature, pH, stratification, ice cover, currents
- Index of ocean health: recycles O_2 and CO_2 , supports food web, supports biodiversity

Invisible to the naked eye but visible to satellites



Phytoplankton global trend is difficult to detect

OC-CCI linear trend

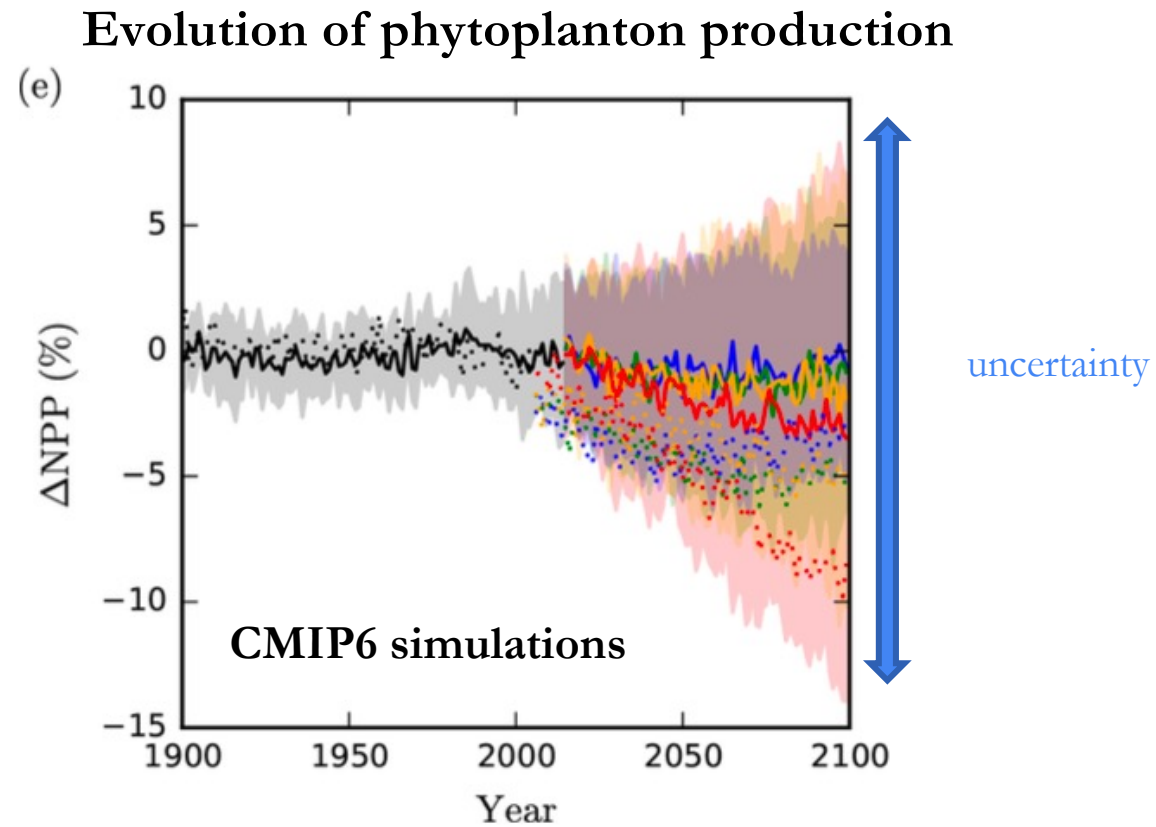


Pauthenet et al (pers. comm.)

IPCC(2021)

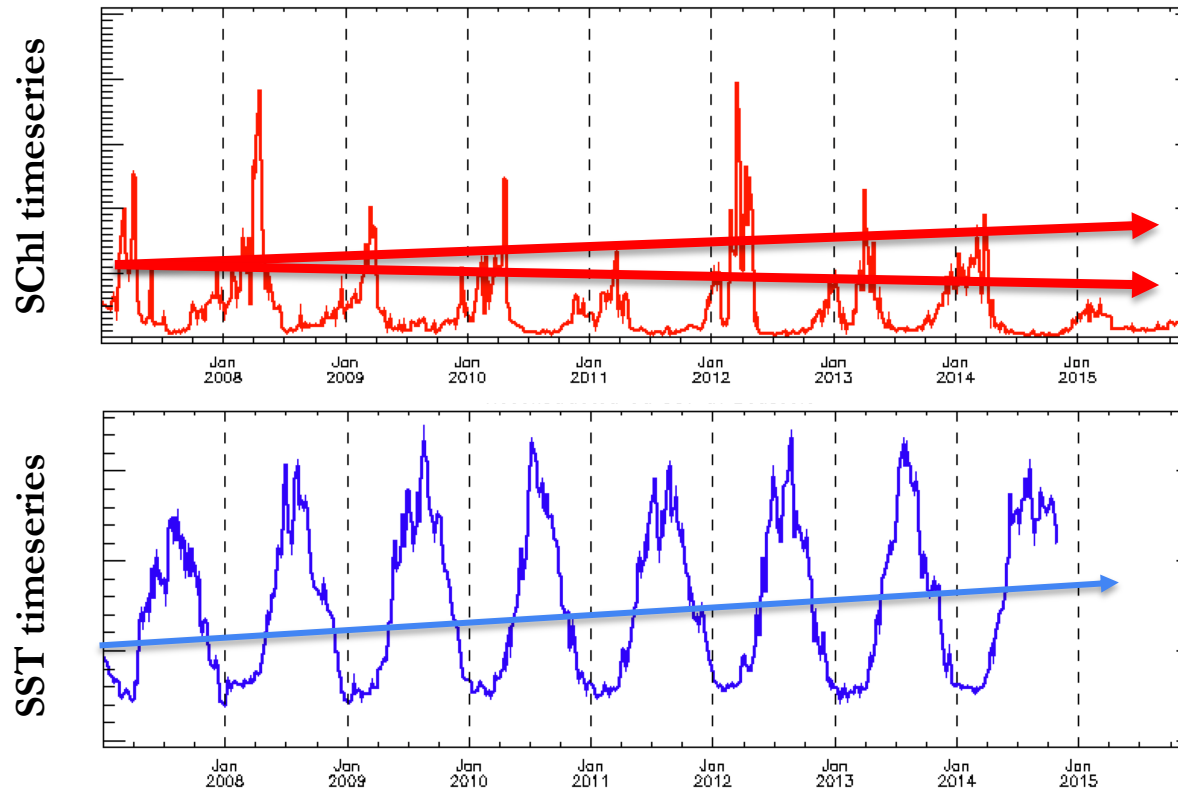
- Non significant trend in many regions
- Opposed trends in different regions

Phytoplankton future evolution is highly uncertain



Entangling of scales in phytoplankton time series

SChl & SST from Boussole station (Mediterranean sea)



ESA CCI products



1/3 of phytoplankton variance due to finescales

Decomposition into:

Finescales

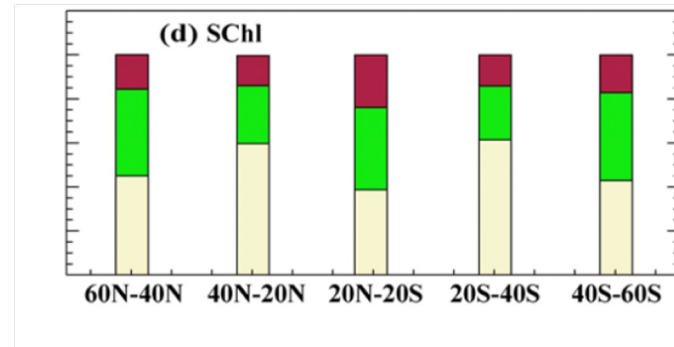
20-100 km

Seasonal

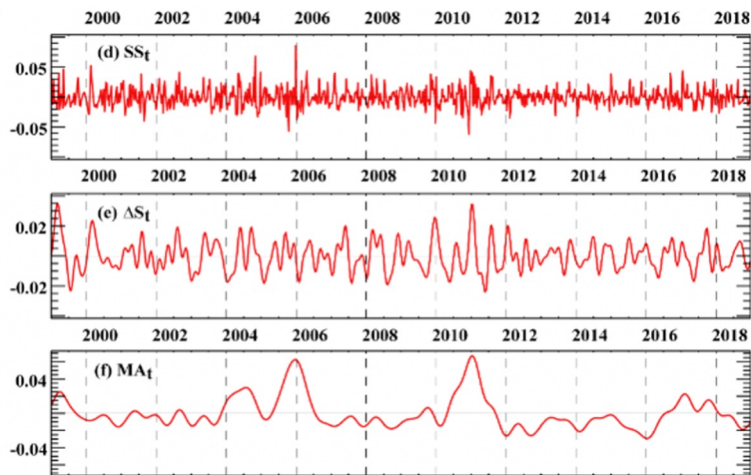
>> 100 km

Long-term

>> 100 km



Finescales
< 1 month



Finescales

Seasonal

Long-term

nature geoscience

Article

<https://doi.org/10.1038/s41561-022-01057-3>

Annual variations in phytoplankton biomass driven by small-scale physical processes

Received: 14 September 2021

M. G. Keerthi¹, C. J. Prend², O. Aumont¹ & M. Lévy¹

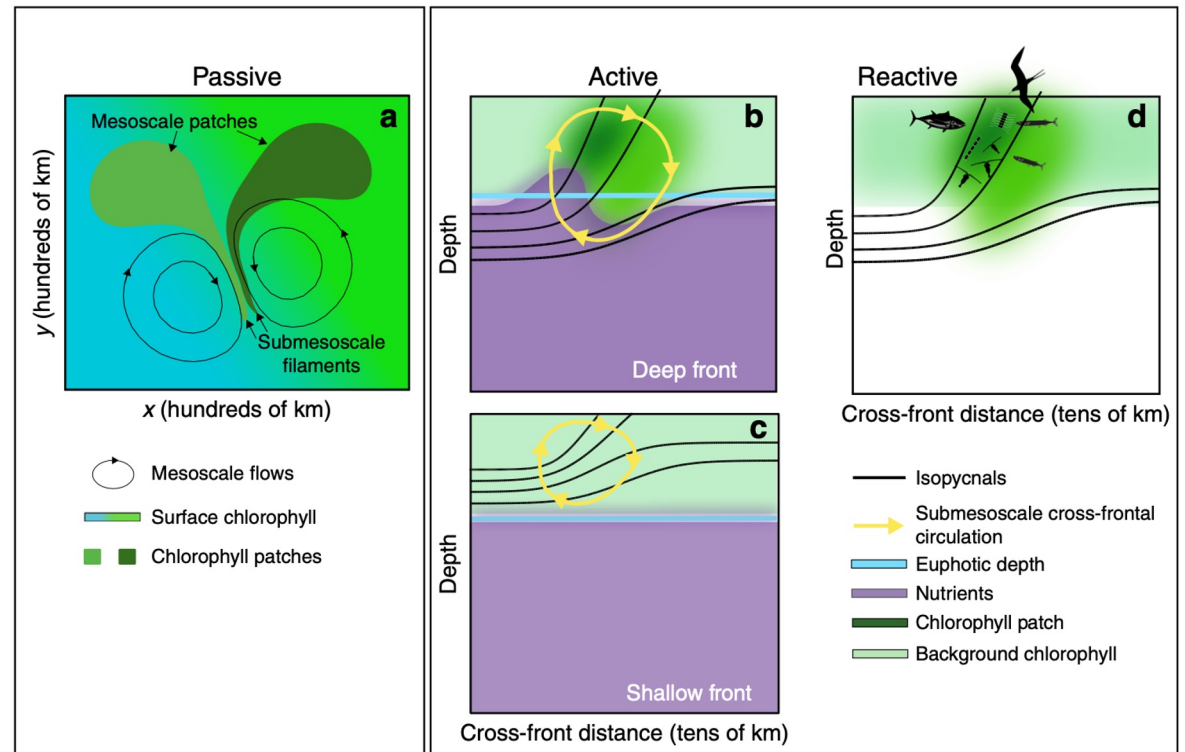
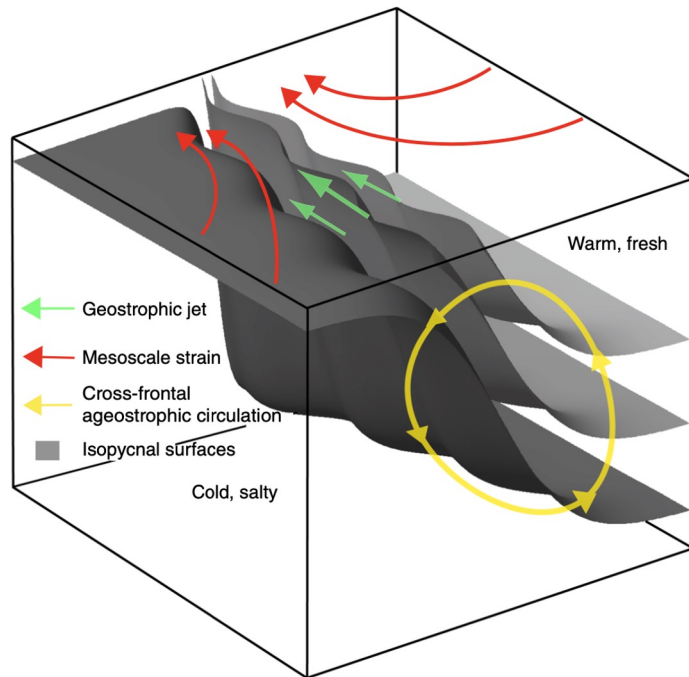
Accepted: 22 September 2022

Does the response of plankton to climate change depend on finescale processes ?



Finescale processes are a large part of the uncertainty

Mecanistic understanding of the local impact of finescale processes



REVIEW ARTICLE

DOI: 10.1038/s41467-018-07059-3

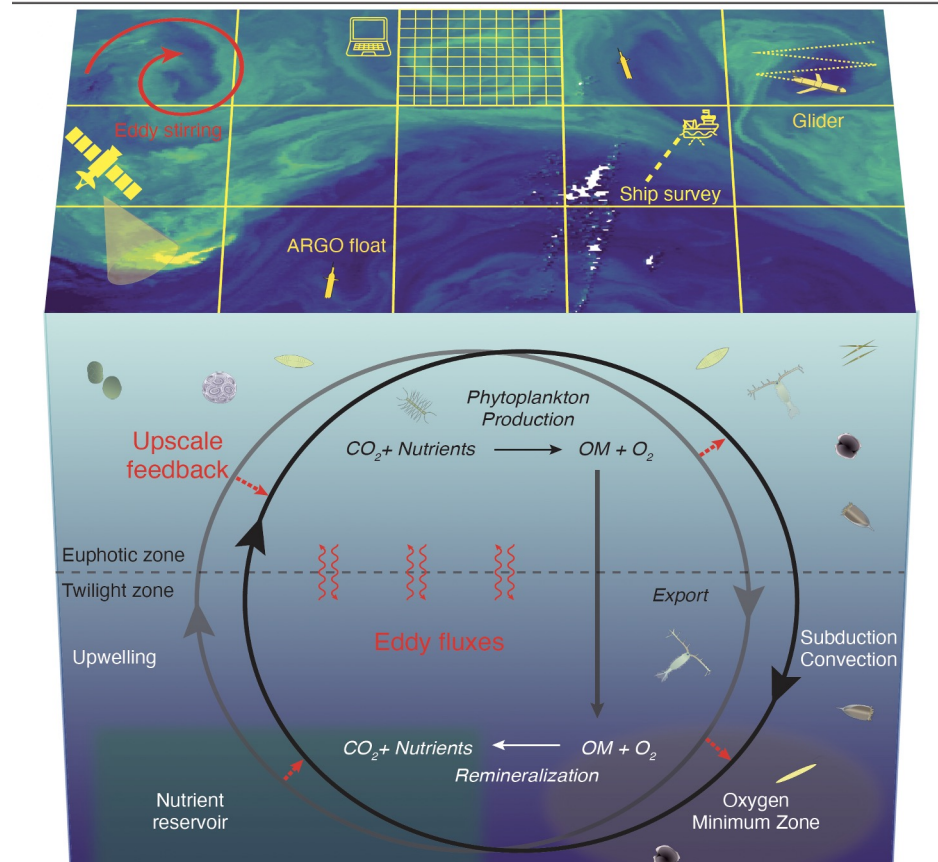
OPEN

The role of submesoscale currents in structuring marine ecosystems

Marina Lévy¹, Peter J.S. Franks² & K. Shafer Smith^{3,4}

Levy et al, 2018

Challenge: Bridge the gap between finescales and large scales

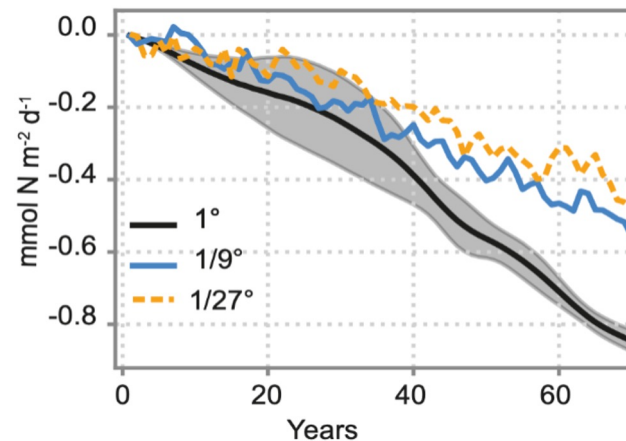


Levy et al, 2024

Problem: conventional tools pushed to their limits

Evidence of importance of finescales on response to warming

Decrease in phytoplankton production in response to warming in a toy ocean model



Damping of climate change impact on phytoplankton when finescales are accounted for

Oceanic primary production decline halved in eddy-resolving simulations of global warming

Damien Couespel¹, Marina Lévy¹, and Laurent Bopp²

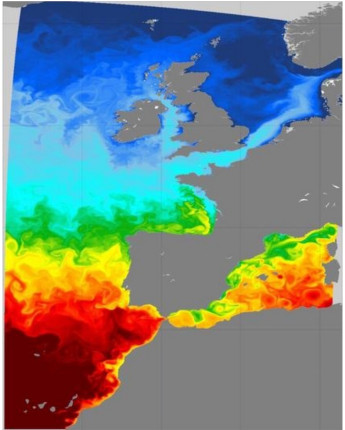
Summary

- Past efforts on understanding finescales have focussed on local eddy-effects
- Climate projections are very sensitive to the way finescales are treated
- Taking finescales into account has gone from a curiosity to a necessity

Future efforts must incorporate the understanding of finescales
for climate monitoring and for climate projection

And now : consolidate bridges to achieve this

Today's bulletin from MOI



Ocean community

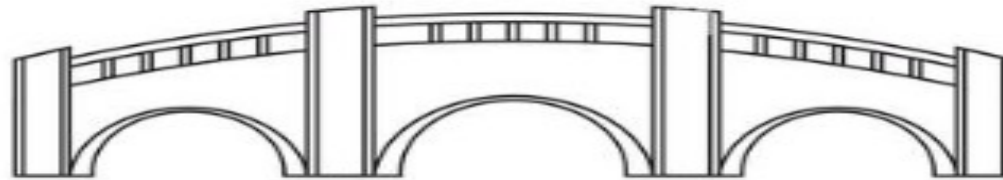
DTO Digital Twin

CMEMS

SWOT

SeaStar

Calling for high-resolution



OC-CCI : HR, nearly global and nearly 25 yrs

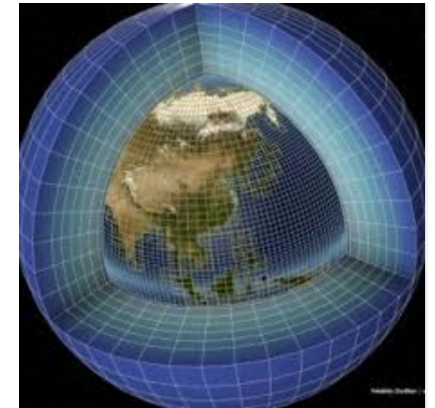
Entangle the role of finescales in climate analysis

Have in mind the big picture when working on finescales

Artificial Intelligence / Deep Learning

- Combine data of different resolutions
- Advance parametrizations of finescales

IPSL ESM used for CMIP6



Climate community

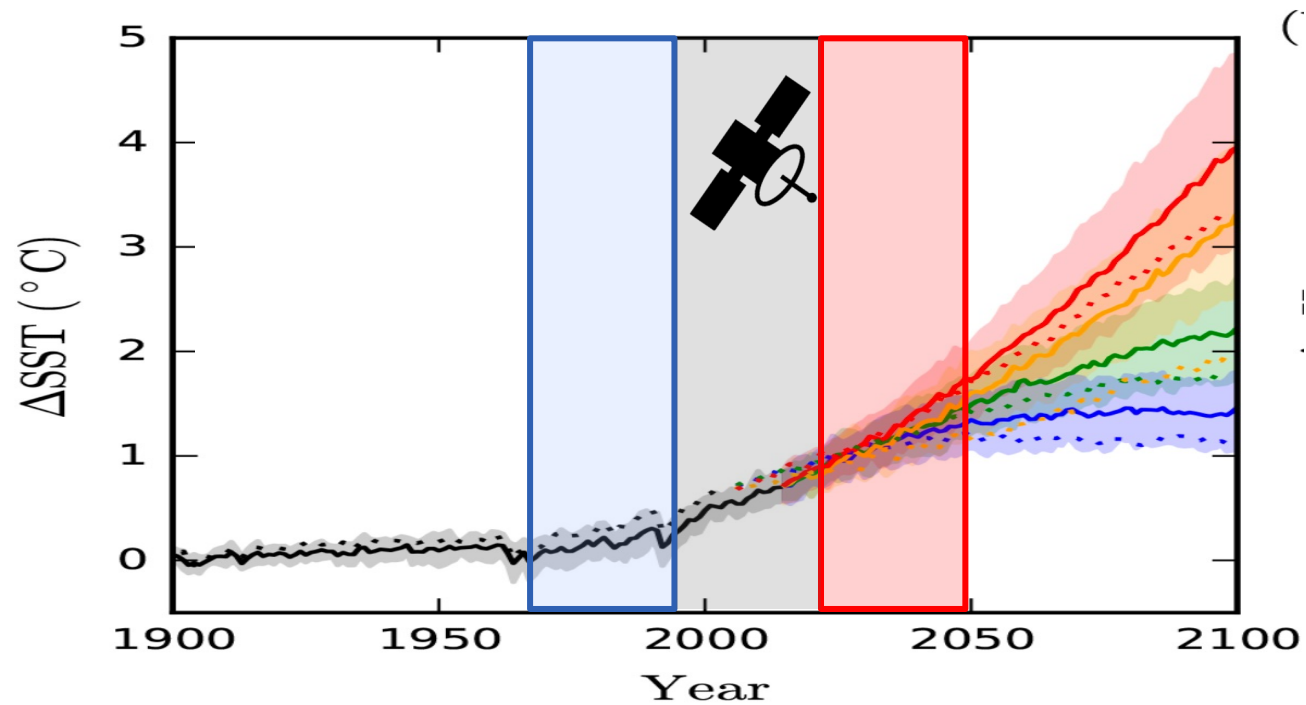
Coarse resolution

CMIP

CCI

Calling for long lasting time series

Epilogue



1. Solution oriented science : sustainability science
2. Be coherent with our messages and reduce the carbon footprint of our activities